

# FOR LEASE > INDUSTRIAL SPACE



94-240

Pupuole Street

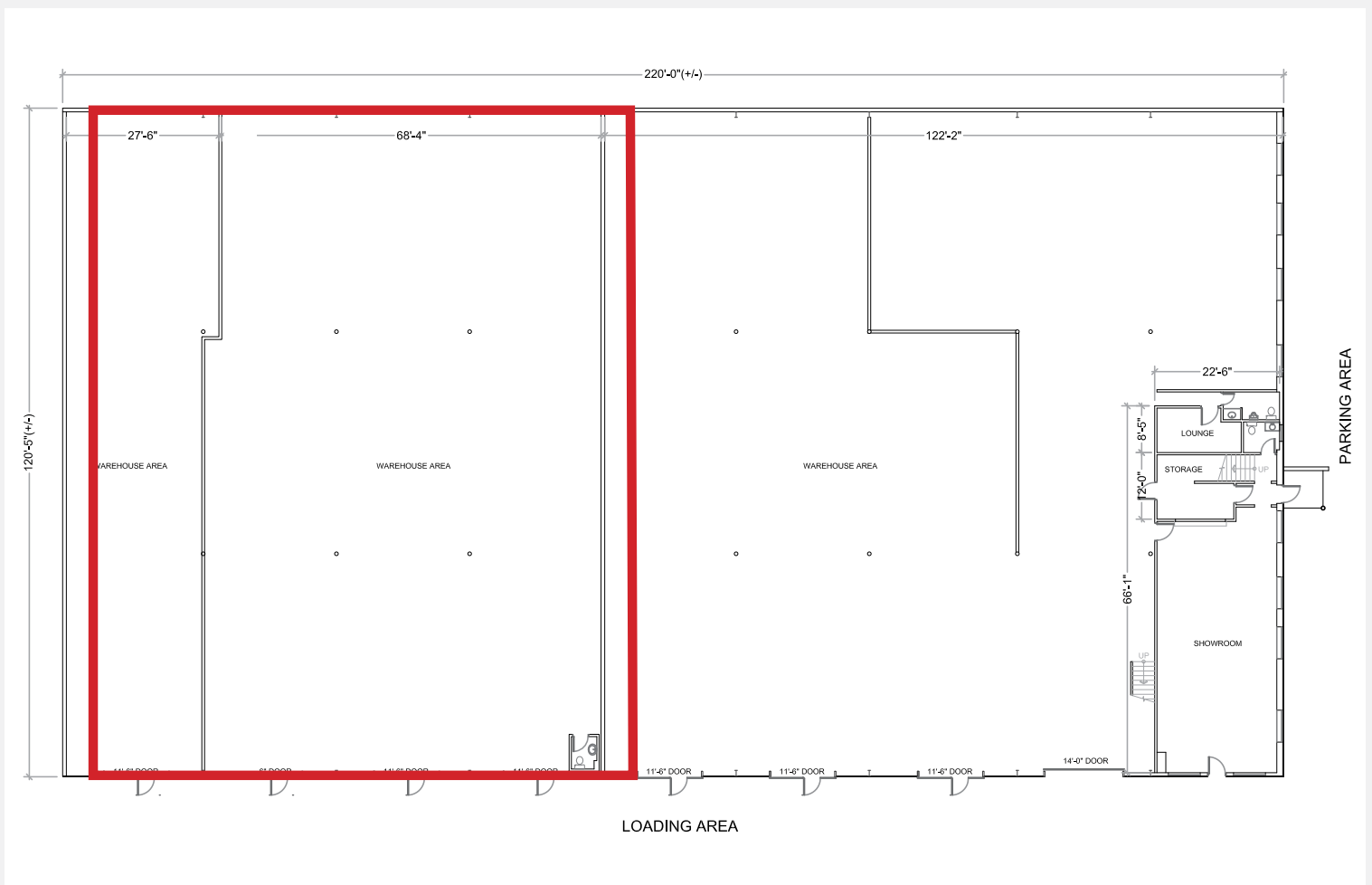
WAIPAHU, HAWAII 96797

NEW ROLLUP DOORS, NEW WAREHOUSE SKIN, AND  
NEW ROOF COMPLETED IN JANUARY 2019





## Site Plan







## Property Highlights

Area:	Waipahu Industrial
TMK No.:	(1) 9-4-49-32
Zoning:	I-2
Available Space:	11,781 SF
Base Rent:	\$1.20 PSF/month
Operating Expenses:	\$0.28 PSF/month
Term:	Negotiable
Parking:	Ample paved yard space
Features & Benefits:	<ul style="list-style-type: none"><li>&gt; High Cube</li><li>&gt; Heavy Power</li></ul>

## Property Description

Opportunity to lease 11,781 square feet of high cube warehouse space with a small office space and ample parking.

Located on the corner of Pupuole and Leokane Streets with close proximity to H1 Freeway.

## Contact Us

William Froelich B, JD, SIOR, CCIM  
Industrial Services Division  
808 523 9711  
[william.froelich@colliers.com](mailto:william.froelich@colliers.com)



COLLIERS INTERNATIONAL  
220 S. King Street, Suite 1800  
Honolulu, HI 96813  
[www.colliers.com/hawaii](http://www.colliers.com/hawaii)

COPYRIGHT © 2019 COLLIERS INTERNATIONAL  
THIS DOCUMENT HAS BEEN PREPARED BY COLLIERS INTERNATIONAL FOR ADVERTISING AND GENERAL INFORMATION ONLY. COLLIERS INTERNATIONAL MAKES NO GUARANTEES, REPRESENTATIONS OR WARRANTIES OF ANY KIND, EXPRESSED OR IMPLIED, REGARDING THE INFORMATION INCLUDING, BUT NOT LIMITED TO, WARRANTIES OF CONTENT, ACCURACY AND RELIABILITY. ANY INTERESTED PARTY SHOULD UNDERTAKE THEIR OWN INQUIRIES AS TO THE ACCURACY OF THE INFORMATION. COLLIERS INTERNATIONAL EXCLUDES UN-AMBIGUOUSLY ALL IMPLIED OR IMPLIED TERMS, CONDITIONS AND WARRANTIES ARISING OUT OF THIS DOCUMENT AND EXCLUDES ALL LIABILITY FOR LOSS AND DAMAGES ARISING THERE FROM. THIS PUBLICATION IS THE COPYRIGHTED PROPERTY OF COLLIERS INTERNATIONAL AND/OR ITS LICENSOR(S). ALL RIGHTS RESERVED.